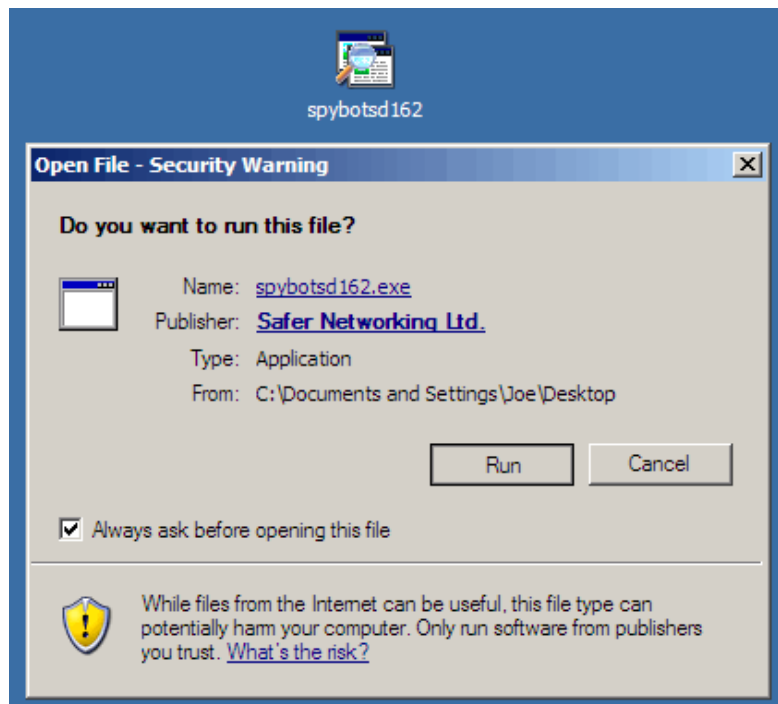


This is from Jep Norwood's website. Thanks, Jep. I have taken the liberty of modifying the format a bit and adjusting the picture size so there will be fewer pages to print if you choose to do so (reduced to 12 from 22). Also inserted page numbers and changed the character print color to black to save on color ink. So, add some protection to your computer and install SpyBot now.

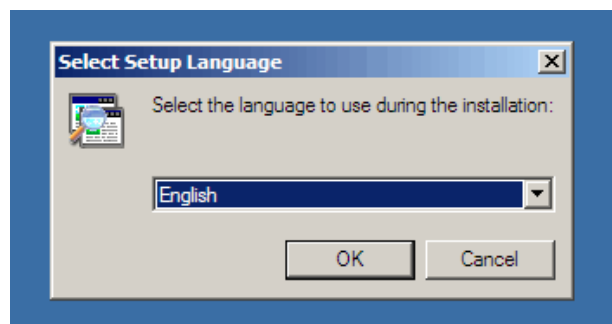
Pat Miller

How to use SpyBot Search and Destroy on Windows

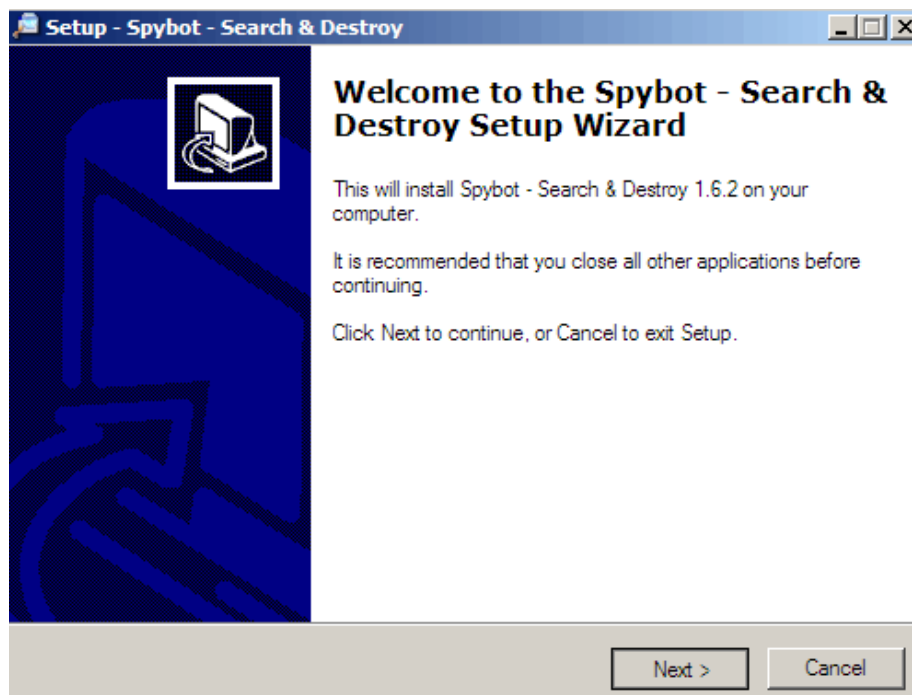
SpyBot Search & Destroy (SS&D) is one of the best, free anti-malware software. In this article, we are going to show you how to install SS&D, and how to update, perform the immunization, and the scanning process. In case that you're using an older version, you can [download SS&D from here](#). (if the link doesn't work, go to Jep's website for the link). Supposing that you already have or downloaded the latest application, it's now time to start the installation process. To do so, navigate to where you downloaded the program and open it, choose "Run":



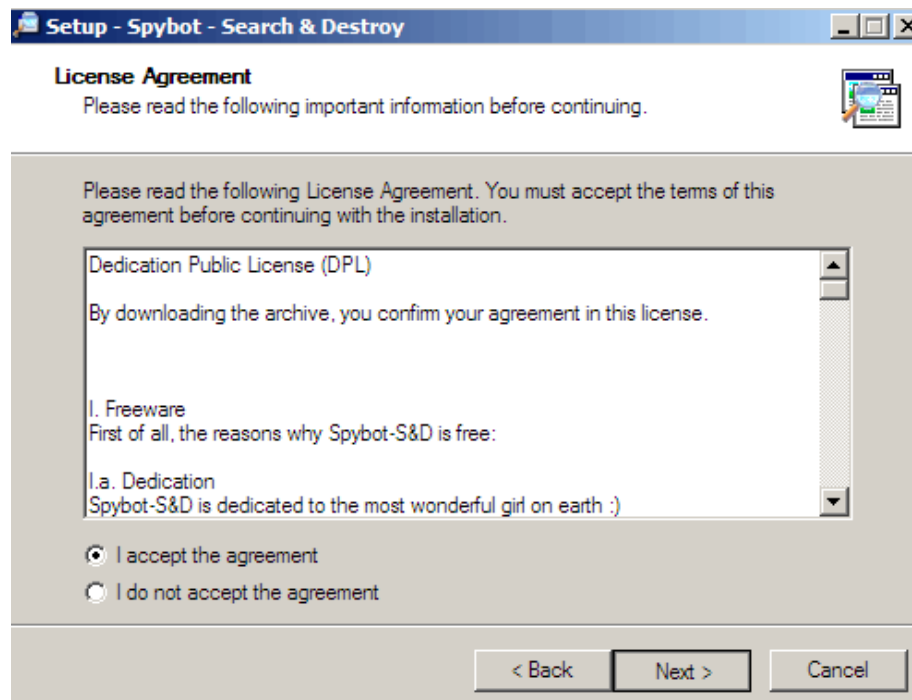
You will notice a small window that will ask you to select a language. The default language is "English." If you need another supported language, scroll down in the language window and select the one you need:



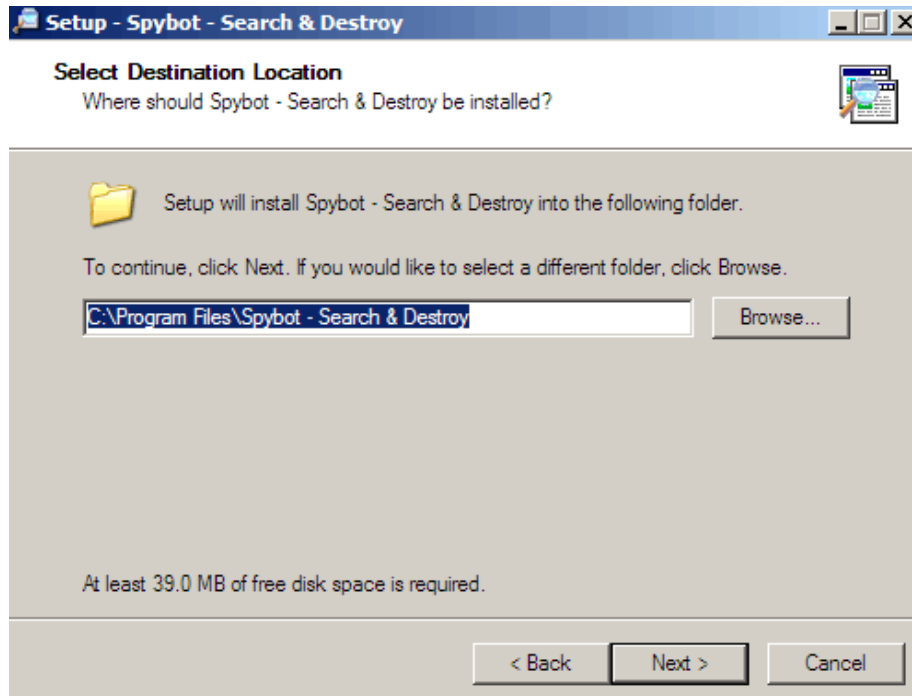
You will now see a welcome window that will tell you a few details about the version of SS&D that you're installing. To continue, click on "Next" (or hit "Cancel" to quit the installation process):



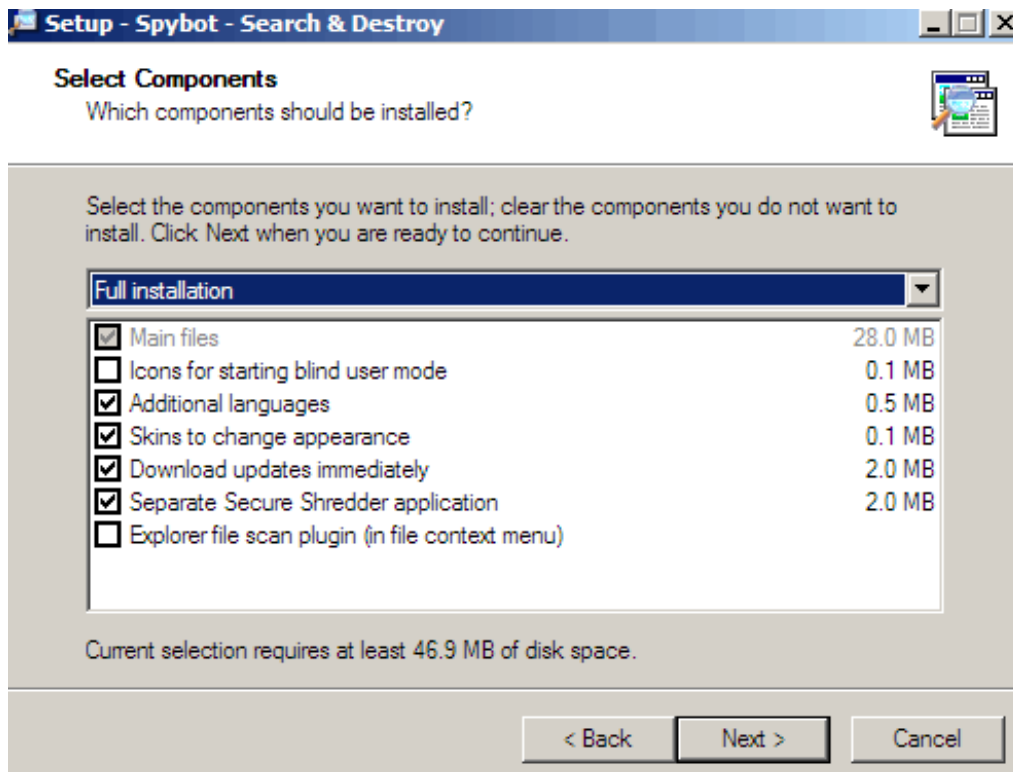
Next is "Terms of Agreement." Make sure to read the entire terms and if you agree with them, check the "I accept the agreement" and click on "Next":



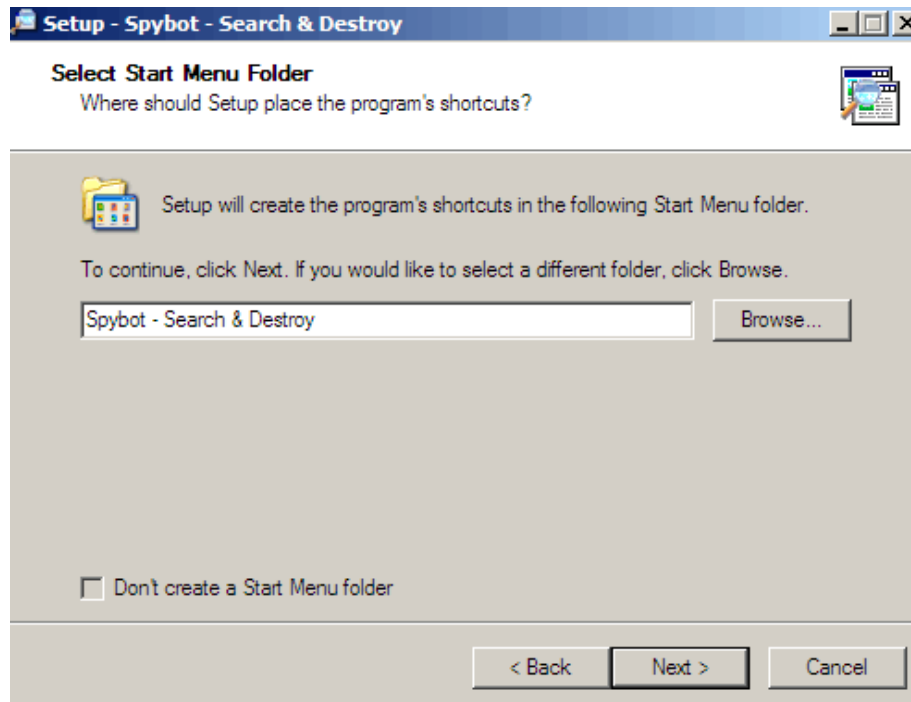
Now you will be asked to choose the installation folder for this software. The default installation location is in "C:\Program Files\SpyBot - Search & Destroy" - if you need another location folder, you can click on "Browse" and choose another location for the installation. Again, click "Next":



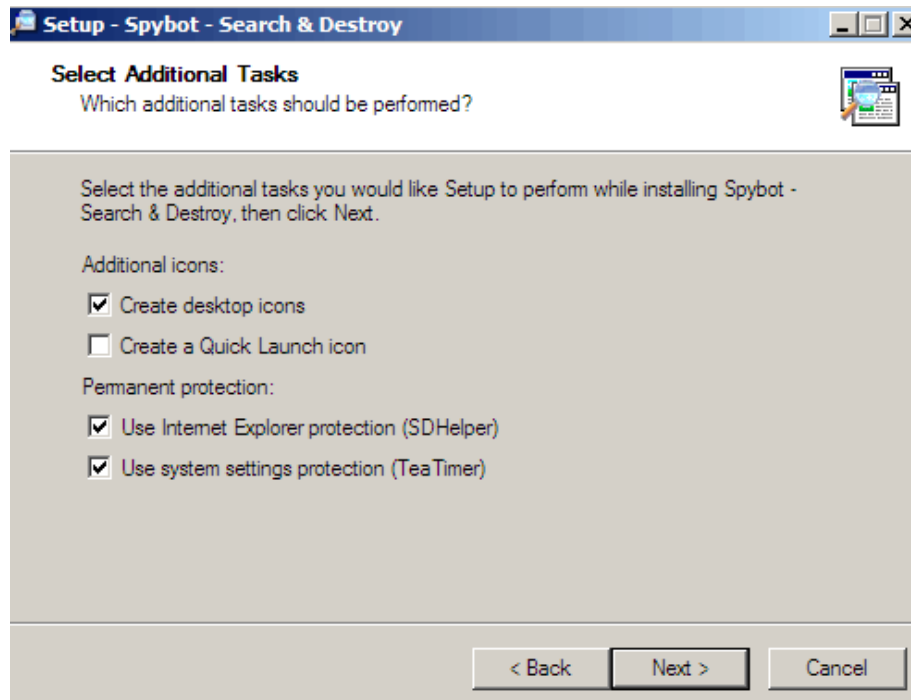
It's now time to choose from some components available to install. If you don't know what components to choose, you can leave it as it is. To continue with the installation select "Next":



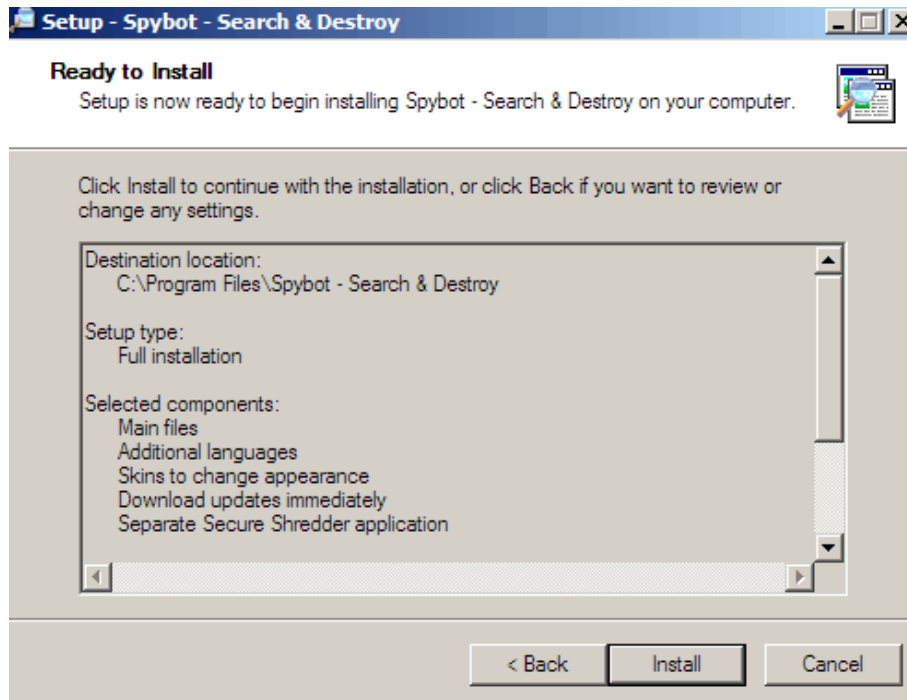
Now it's going to ask us where to place the shortcuts for this program. If you want to place the shortcuts in a different folder, choose that location from "Browse." If you want a shortcut in your Start Menu do not check the "Don't create a Start Menu folder" box; if you do, check it. Click on "Next":



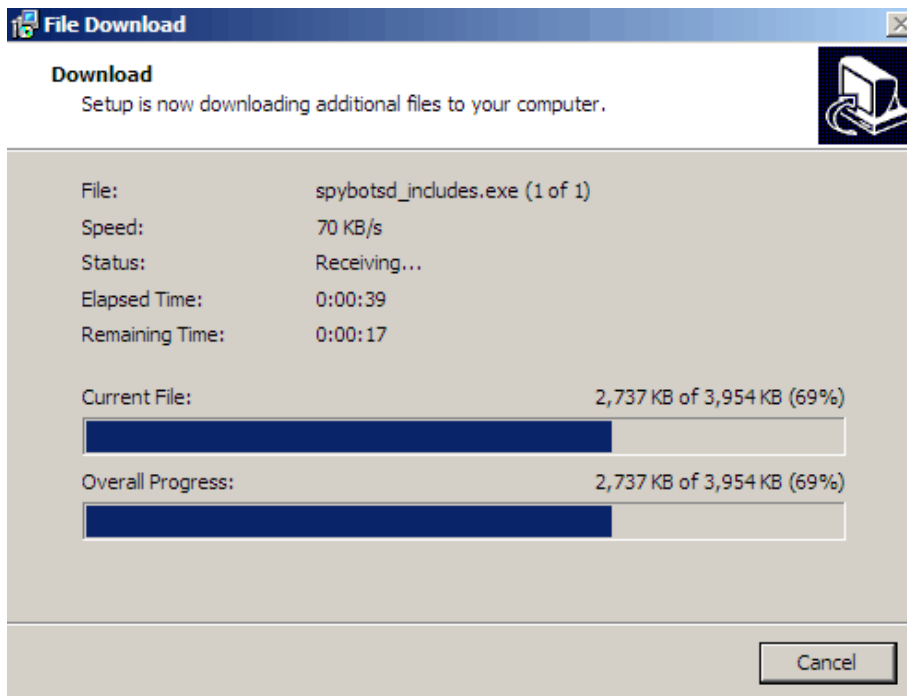
Click on "Next" and choose from any additional tasks, like any additional icons, and click on "Next":



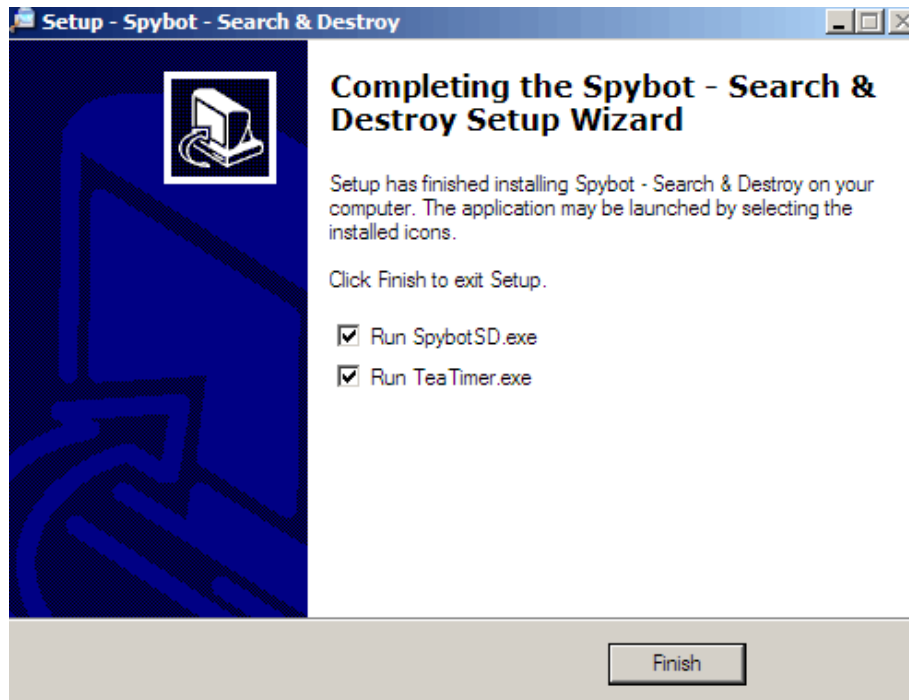
Now, SS&D is ready to be installed. If you need to make any changes you can hit "Back," otherwise click on "Next" and the installation will start:



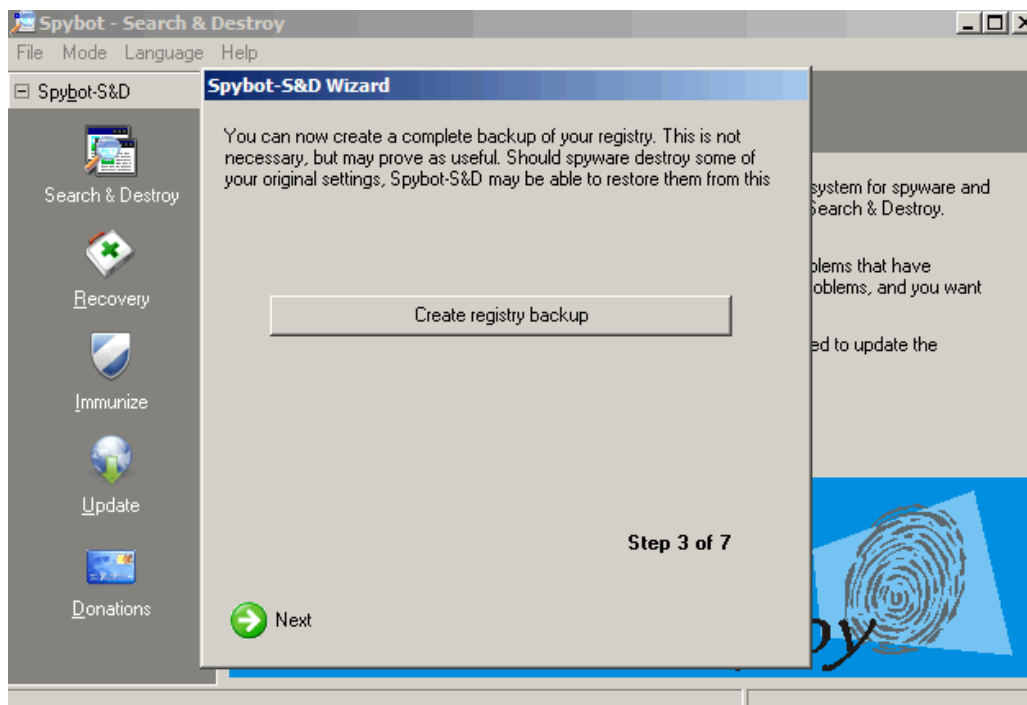
As the installation has been started, you can now notice that additional needed files are being downloaded during the installation:



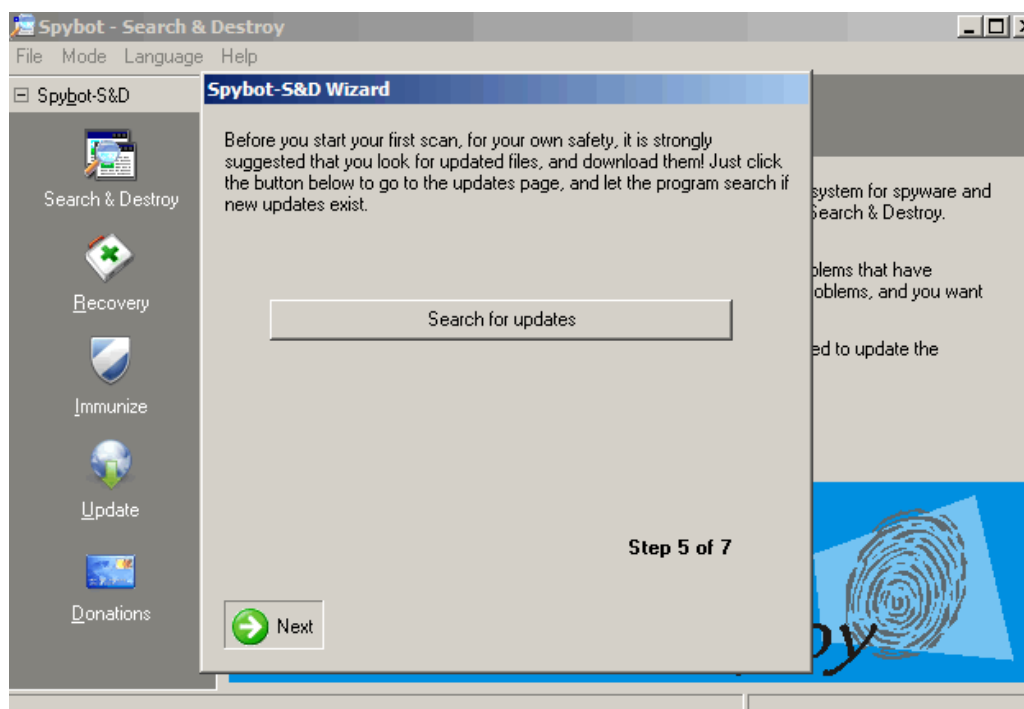
Installation has been completed, if you can see a similar window with the one from the picture below, click on "Finish":



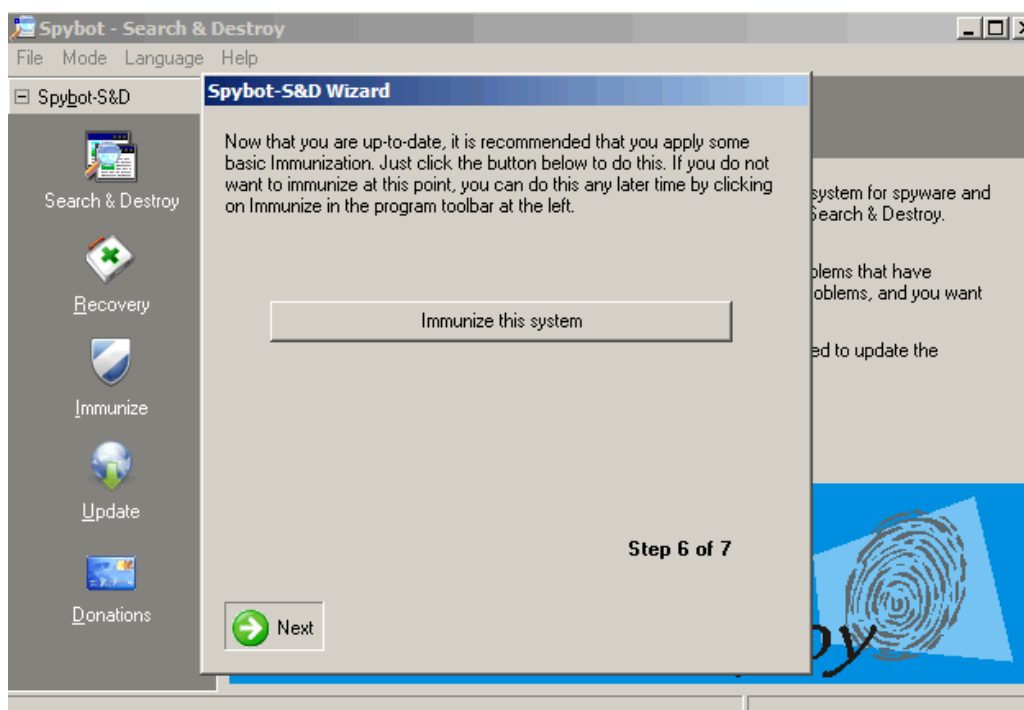
Now, when the program starts for the first time, it is going to ask you to go through a couple of steps that will help the program to configure itself. You can choose to follow these steps as they are required by the program but I am going to skip them for now and click each time on "Next." At the end I am going to do them manually. In the first window, the program is asking me for registry backup (you can do the registry backup now or skip as I am) and I am choosing "Next":



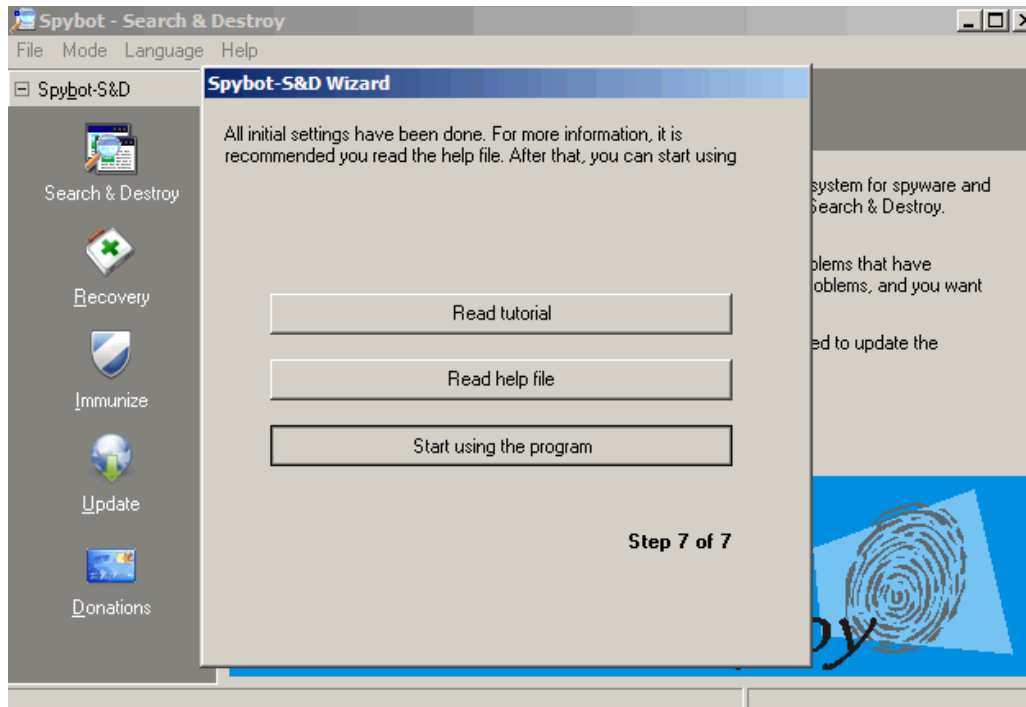
I am going to skip the update process now, but will update it manually later (again you can choose to update it right now).



Another window, asking to "Immunize" the system is next; again I am going to click on "Next" and I am going with immunization later:



If you chose "Next" each time like I've done, you will see a confirmation window telling you that "All settings have been done." Click on "Start using the program" and you will see the program interface for the first time:



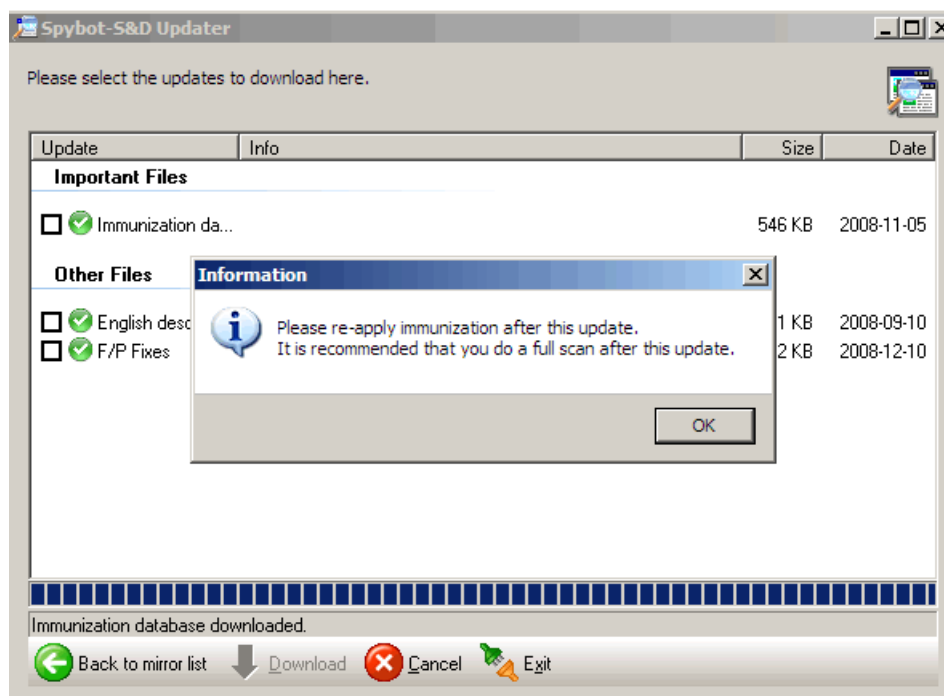
You should see "SpyBot - Search and Destroy" program interface for the first time like in the picture below:



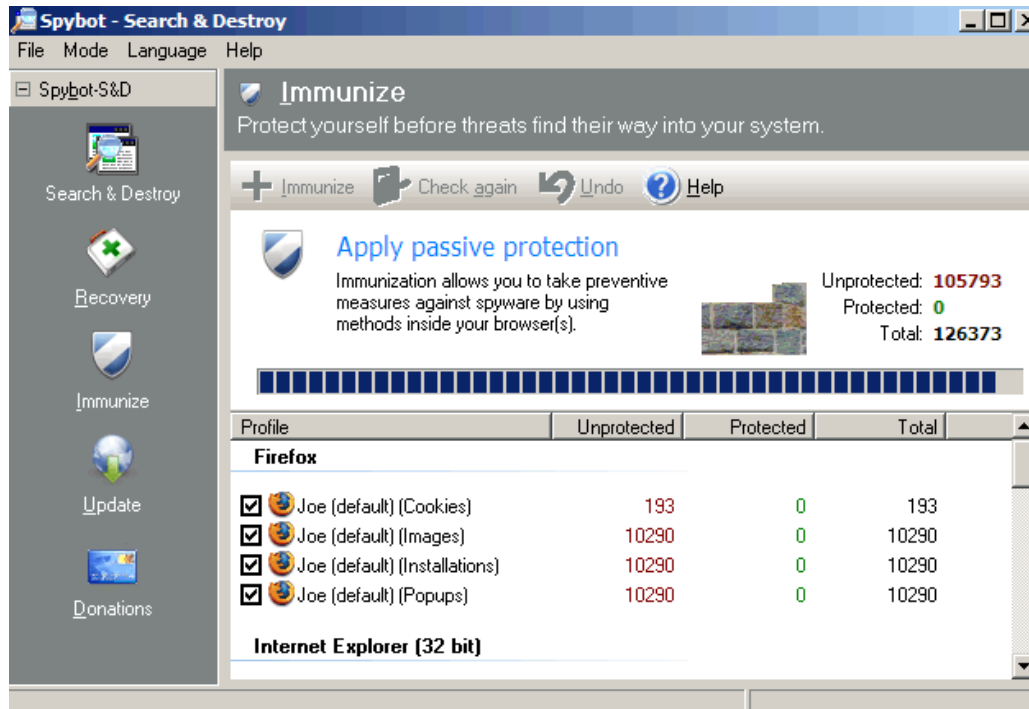
Now, if you skipped the steps that I've skipped by choosing "Next" each time, it's now time to do them manually. The first thing that I am going to do is update SS&D. To do so, make sure to click on "Search for Updates" and select a server that is closest to your location for faster download speeds and then click on "Continue." You can see how a window should look when you select "Search for Updates" like in the picture below:



You will next see what components are available for download. If you have a slow Internet connection like dial-up or ISDN, I would recommend you to update (download) only the immunization databases. Otherwise, I recommend you download all the updates available. If you selected the updates, you can click on "Download" and the program will start the update process. When the update is complete (in a couple of seconds or minutes depending on your Internet connection speed) the program will notify you to re-apply the immunization for your computer. This is why I chose to skip those steps earlier.



As I said, it's now time to "Immunize" your computer. To do so, click on "Immunize" located on the main program interface near "Update." The immunization process will be completed in a couple of seconds:



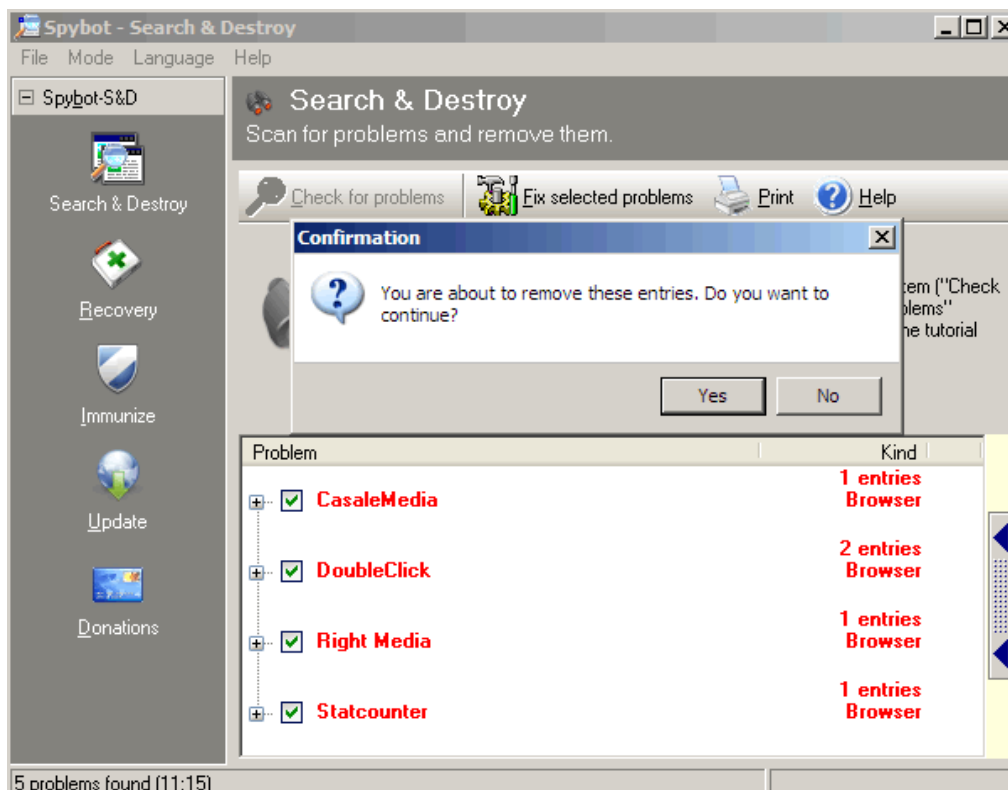
We have installed the program, updated it, immunized it and now it's time to scan the computer for problems. To do so, go back to the main program interface by clicking on the "Search & Destroy" icon and select it. You should see the window like in this picture:



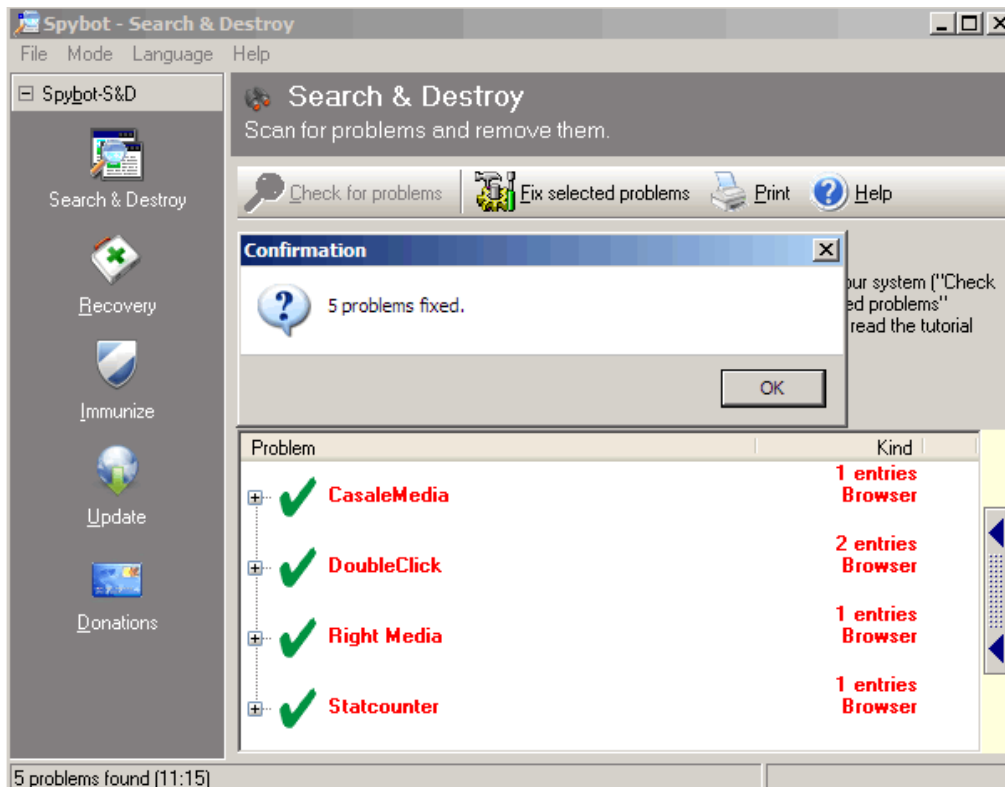
As you probably noticed, to scan your computer for any infections, all you need to do is to click on "Check for problems" and the program is going to scan your computer for known infections. Please be patient as it's going to take a couple of minutes:



After the scanning process finishes you will see all infections found in the same window. To remove the detected infections, click on "Fix selected problems" and it will remove them:



And that's it. If you selected "Fix selected problems," the program is going to remove the infections and will show you the confirmation message inside a small window:



You have learned how to use SS&D and you know how to install it, update it, immunize your computer and how to perform a system scan.

DON'T FORGET TO UPDATE SS&D at least once a week (the SS&D team says that "new updates are released on Wednesday's") and regularly scan your system for infections. Remember that this program cannot offer the same protection compared to a good anti-virus but it can make a difference and it can help you to detect and remove infections that most anti-viruses cannot detect. This is one of the best anti-spyware software that I have ever used and it's constantly being improved.